



Forward Curved



Dual Inlets Blowers

2 AND 4 POLE MOTORS

S&P Forward Curved Centrifugal Blowers use the same versatile external rotor motor as our motorized impellers. The forward curved motorized impellers are designed to provide optimal performance when operated with a scroll housing designed by S&P. Recommended impeller/scroll models are shown in the following tables.

2 POLE MOTORS	PERFORMANCES									Lim.	DIMENSIONS								
	MODEL	N°	V	Hz	CFM	W	RPM	dBA	µF		In.Wg	A	B	C	D	E			
RF2C-133/190 K194 S	1	115	60	403	205	1800	56	24	0,4	9,13	232	3,94	100	7,88	200	8,07	205	3,94	100
RF2C-133/190 K097 S	1	230	60	403	205	1800	56	6	0,4	9,13	232	3,94	100	7,88	200	8,07	205	3,94	100
RF2C-146/180 K000 S	2	115	60	277	250	2340	63	20	1,0	9,13	232	3,94	100	7,88	200	8,07	205	3,94	100
RF2C-146/180 K102 S	2	230	60	277	250	2340	63	5	1,0	9,13	232	3,94	100	7,88	200	8,07	205	3,94	100
RF2C-133/190 K000 SS	3	115	60	412	260	1850	57	20	0,4	9,13	215	2,71	69	6,89	175	7,12	181	3,46	88
RF2C-133/190 K093 SS	3	230	60	412	260	1850	57	5	0,4	9,13	215	2,71	69	6,89	175	7,12	181	3,46	88

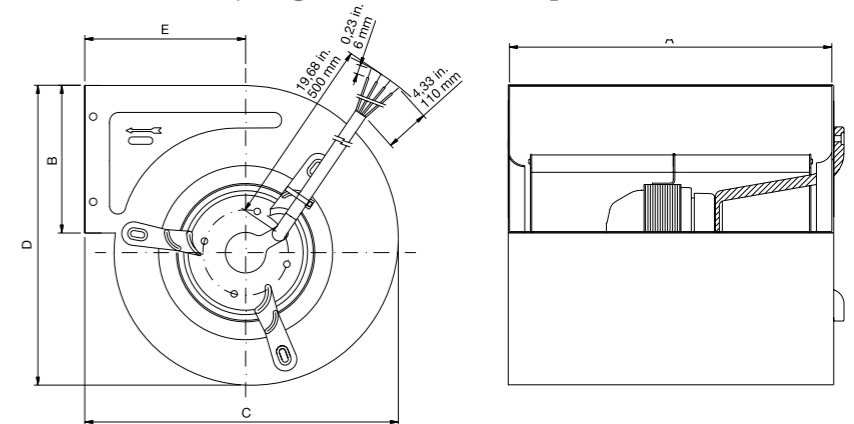
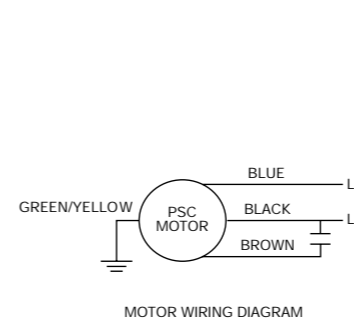
All data taken at the Lim In.Wg point indicated at the table for each model (name plate rating may vary from data).

4 POLE MOTORS	PERFORMANCES									Lim.	DIMENSIONS								
	MODEL	N°	V	Hz	CFM	W	RPM	dBA	µF		In.Wg	A	B	C	D	E			
RF4C-133/190 K222 SS	1	115	60	295	70	1200	53	8	0	8,46	215	2,71	69	6,89	175	7,12	181	3,46	88
RF4C-133/190 K109 SS	1	230	60	295	70	1200	53	2	0	8,46	215	2,71	69	6,89	175	7,12	181	3,46	88
RF4C-133/190 K000 S	2	115	60	406	85	1000	53	8	0	9,13	232	3,94	100	7,88	200	8,07	205	3,94	100
RF4C-133/190 K030 S	2	230	60	406	85	1000	53	2	0	9,13	232	3,94	100	7,88	200	8,07	205	3,94	100
RF4C-133/190 K251 S	3	115	60	500	85	1100	53	10	0	9,13	232	3,94	100	7,88	200	8,07	205	3,94	100
RF4C-133/190 K040 S	3	230	60	500	85	1100	53	2,5	0	9,13	232	3,94	100	7,88	200	8,07	205	3,94	100
RF4C-146/180 K000 S	4	115	60	447	120	1025	55	12	0	9,13	232	3,94	100	7,88	200	8,07	205	3,94	100
RF4C-146/180 K040 S	4	230	60	447	120	1025	55	3	0	9,13	232	3,94	100	7,88	200	8,07	205	3,94	100
RF4C-160-150 K000 S	5	115	60	424	140	1225	58	12	0,2	6,92	176	4,13	105	8,81	224	9,44	240	4,48	114
RF4C-160-150 K048 S	5	230	60	424	140	1225	58	3	0,2	6,92	176	4,13	105	8,81	224	9,44	240	4,48	114
RF4C-180/184 K136 S	6	115	60	750	250	1350	61	20	0,4	8,81	224	4,84	123	10,5	267	10,27	261	5,70	145
RF4C-180/184 K107 S	6	230	60	750	250	1350	61	5	0,4	8,81	224	4,84	123	10,5	267	10,27	261	5,70	145

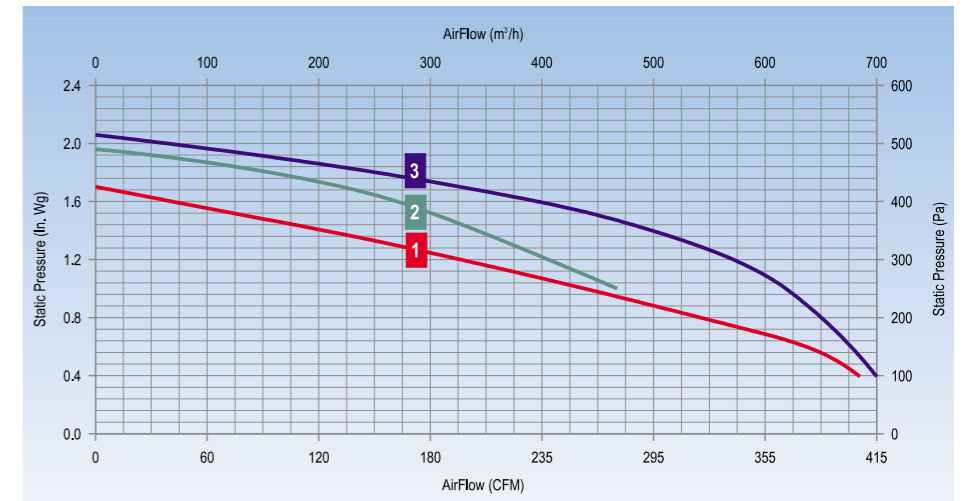
All data taken at the Lim In.Wg point indicated at the table for each model (name plate rating may vary from data).



Dual Inlet Forward Curved Centrifugal Blowers are designed for use where space limitations are a problem. The impellers are permanently mounted to the external rotors for ease of installation and maintenance-free operation. These units may be mounted in any orientation for effective air movement. Optional configuration includes different size scroll housing and impellers mounted on either end of the motor, airflow aimed at any angle and various output characteristics.



2 POLE MOTORS



Product Features

- Sealed Ball Bearings
- 20" (500 mm) Standard Lead Length

Optional Accessories

- Outlet Flanges

4 POLE MOTORS

