



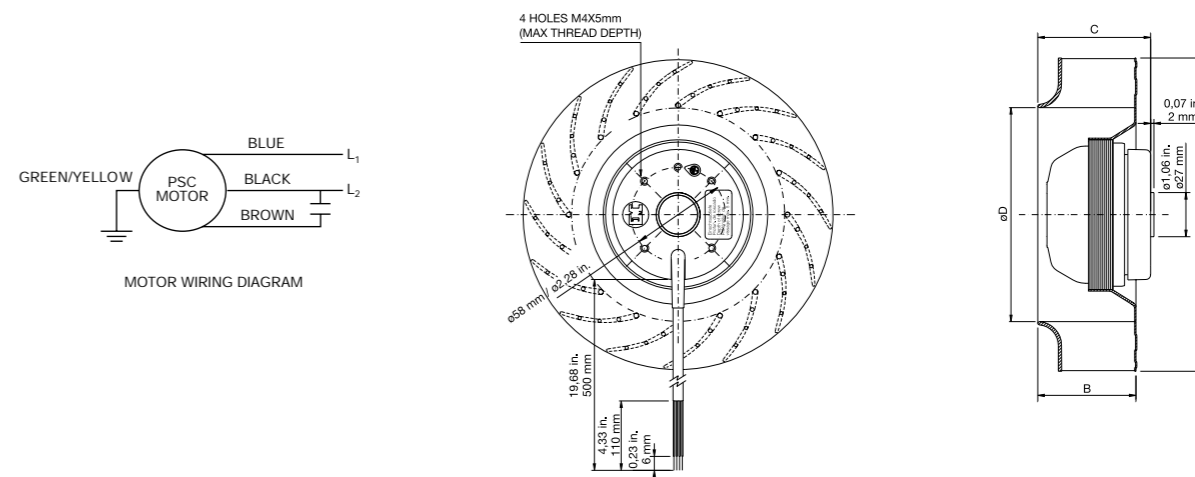
Backward Curved Motorized Impellers

2 POLE MOTORS

2 POLE MOTORS	PERFORMANCES								DIMENSIONS								Impeller Material
	MODEL	N°	V	Hz	CFM	W	RPM	dBA	μF	A		B		C		D	
										in.	mm	in.	mm	in.	mm	in.	mm
2B508-115TEG	1	115	60	150	30	3400	63	3	5,24	133	2,36	60	3,35	85	3,54	90	Metallic
2B508-230TEG	1	230	60	150	30	3400	63	1	5,24	133	2,36	60	3,35	85	3,54	90	Metallic
2B628-115TEG	2	115	60	270	65	2600	68	8	6,89	175	1,85	47	2,28	58	5,15	131	Metallic
2B628-230TEG	2	230	60	270	65	2600	68	2	6,89	175	1,85	47	2,28	58	5,15	131	Metallic
2B630-115TEG	3	115	60	250	100	2250	60	6	7,08	180	2,04	52	2,76	70	4,76	121	Metallic
2B630-230TEG	3	230	60	250	100	2250	60	2	7,08	180	2,04	52	2,76	70	4,76	121	Metallic
2B716-115TEG	4	115	60	370	90	2600	65	6	7,48	190	2,63	60	2,67	68	5,15	131	Met-Plas
2B716-230TEG	4	230	60	370	90	2600	65	2	7,48	190	2,63	60	2,67	68	5,15	131	Met-Plas
2B824-115TEG	5	115	60	560	115	3050	75	8	8,66	220	2,48	63	2,8	71	6,26	159	Met-Plas
2B824-230TEG	5	230	60	560	115	3050	75	2	8,66	220	2,48	63	2,8	71	6,26	159	Met-Plas
2B827-115TEG	6	115	60	588	160	3250	73	15	8,86	225	2,44	62	2,83	72	6,06	154	Metallic
2B827-230TEG	6	230	60	588	160	3250	73	4	8,86	225	2,44	62	2,83	72	6,06	154	Metallic
2B828-115TEG	7	115	60	735	200	2775	70	18	8,86	225	3,48	88	3,86	99	6,06	154	Metallic
2B828-230TEG	7	230	60	735	200	2775	70	5	8,86	225	3,48	88	3,86	99	6,06	154	Metallic
2B928-115TEG	8	115	60	912	215	2600	75	20	9,84	250	3,3	84	3,89	99	6,85	174	Metallic
2B928-230TEG	8	230	60	912	215	2600	75	5	9,84	250	3,3	84	3,89	99	6,85	174	Metallic

All data taken @ 0.00 S.P. with inlet ring at 60 Hz (name plate rating may vary from data).

S&P Backward Curved Motorized Impellers offer a quiet and compact air moving solution. The Permanent Split Capacitor (PSC) motors provide reduced operating costs and longer service life. Ball bearing construction allows multiple mounting options. Motorized Impellers have low profiles that do not require a housing. Air is discharged 360° radially from the impeller wheel. These units operate very efficiently at high pressures.



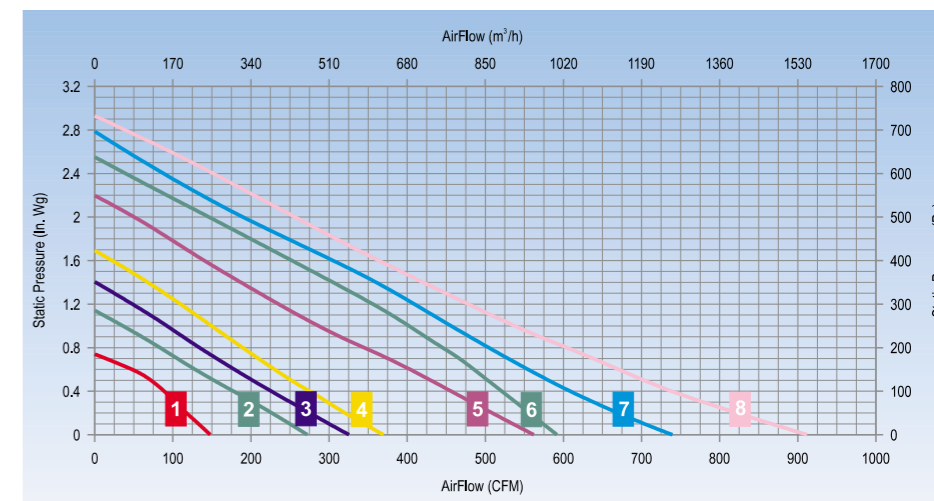
Product Features

- Sealed Ball Bearings
- 20" (500 mm) Standard Lead Length
- Clockwise Rotation
- Viewing Inlet

Optional Accessories

- Inlet Rings

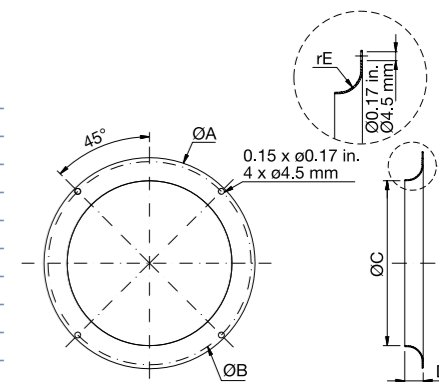
2 POLE MOTORS



Accessories

INLET RINGS for Backward Curved Impellers

Ø Impeller	A		B		C		D		E	
	in	mm	in	mm	in	mm	in	mm	in	mm
133	5.07	129	4.64	118	3.3	84	0.51	13	0.27	7
175	6.69	170	6.22	158	4.92	125	0.55	14	0.39	10
180 / 190	6.69	170	6.22	158	4.92	125	0.55	14	0.39	10
220	9.92	252	9.64	245	5.98	152	0.78	20	0.78	22
225	8.78	223	8.26	210	5.74	146	1.1	28	0.98	25
250	10	255	9.44	240	6.45	164	1.22	31	1.1	28
280	11	280	10.2	260	7.2	183	1.37	35	1.22	31





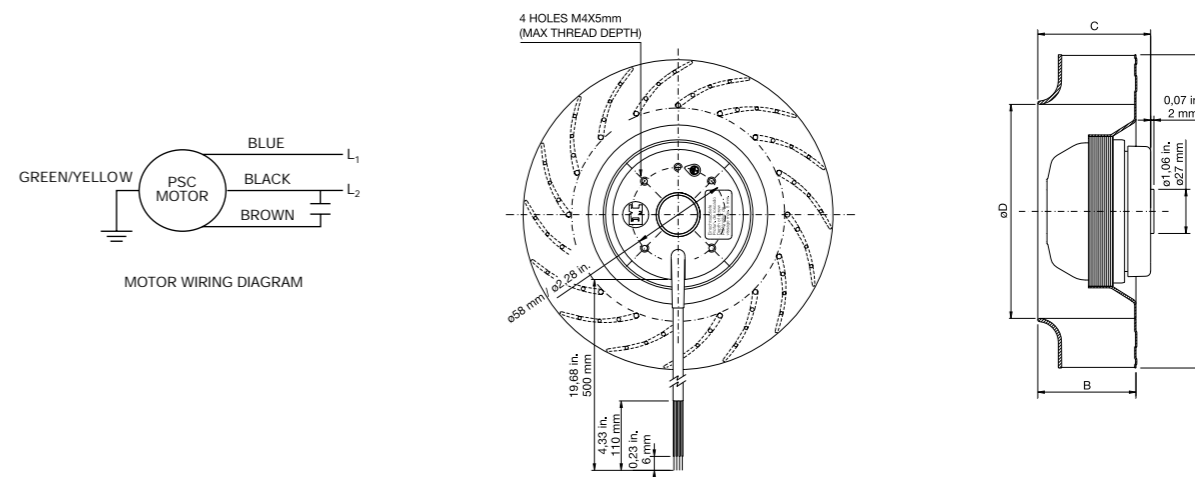
Backward Curved Motorized Impellers

4 POLE MOTORS

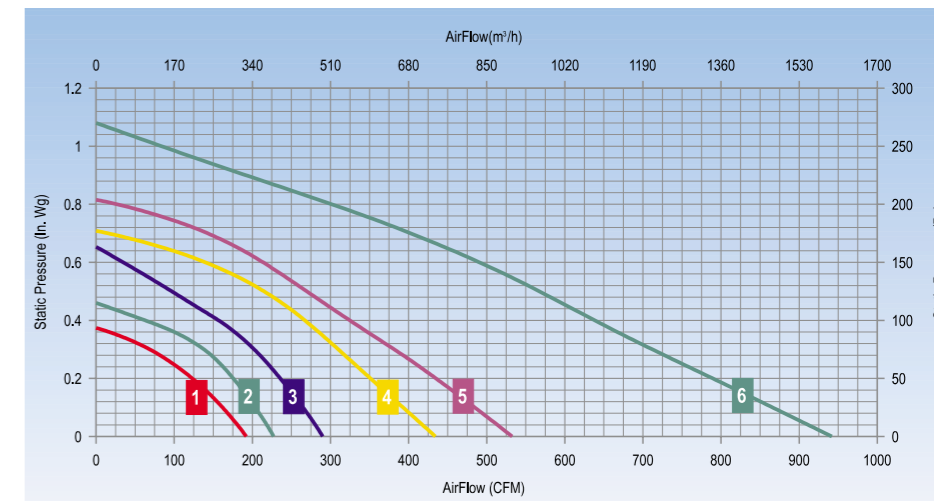
4 POLE MOTORS	PERFORMANCES								DIMENSIONS								Impeller Material
	MODEL	N°	V	Hz	CFM	W	RPM	dBA	µF	A	B	C	D				
									in.	mm	in.	mm	in.	mm	in.	mm	
4B630-115TEG	1	115	60	191	35	1550	54	3	7,08	180	2,04	52	2,76	70	4,76	121	Metallic
4B630-230TEG	1	230	60	191	43	1550	54	0,8	7,08	180	2,04	52	2,76	70	4,76	121	Metallic
4B716-115TEG	2	115	60	225	32	1675	52	3	7,48	190	2,36	60	2,67	68	5,15	131	Met-Plas
4B716-230TEG	2	230	60	225	32	1675	52	1	7,48	190	2,36	60	2,67	68	5,15	131	Met-Plas
4B827-115TEG	3	115	60	288	30	1650	55	3	8,86	225	2,44	62	2,76	70	6,06	154	Metallic
4B827-230TEG	3	230	60	288	30	1650	55	1	8,86	225	2,44	62	2,76	70	6,06	154	Metallic
4B828-115TEG	4	115	60	432	42	1650	59	5	8,86	225	3,46	88	3,89	99	6,06	154	Metallic
4B828-230TEG	4	230	60	432	42	1650	59	1	8,86	225	3,46	88	3,89	99	6,06	154	Metallic
4B928-115TEG	5	115	60	530	50	1575	63	5	9,84	250	3,3	84	3,89	99	6,85	174	Metallic
4B928-230TEG	5	230	60	530	58	1575	63	1	9,84	250	3,3	84	3,89	99	6,85	174	Metallic
4B1100-115TEG	6	115	60	940	105	1650	66	10	11,02	280	4,17	106	4,8	122	7,52	191	Metallic
4B1100-230TEG	6	230	60	940	105	1650	66	2,5	11,02	280	4,17	106	4,8	122	7,52	191	Metallic

All data taken @ 0.00 S.P. with inlet ring at 60 Hz (name plate rating may vary from data).

S&P Backward Curved Motorized Impellers offer a quiet and compact air moving solution. The Permanent Split Capacitor (PSC) motors provide reduced operating costs and longer service life. Ball bearing construction allows multiple mounting options. Motorized Impellers have low profiles that do not require a housing. Air is discharged 360° radially from the impeller wheel. These units operate very efficiently at high pressures.



4 POLE MOTORS



Product Features

- Sealed Ball Bearings
- 20" (500 mm) Standard Lead Length
- Clockwise Rotation Viewing Inlet

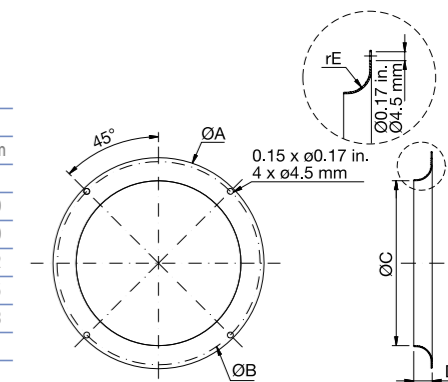
Optional Accessories

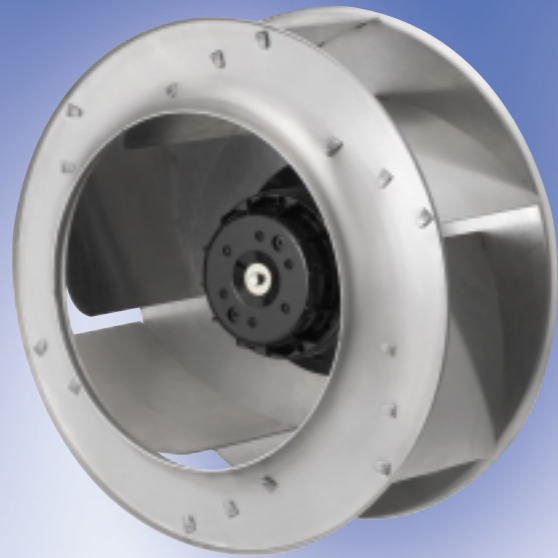
- Inlet Rings

Accessories

INLET RINGS for Backward Curved Impellers

ø Impeller	A		B		C		D		E	
	in	mm	in	mm	in	mm	in	mm	in	mm
133	5.07	129	4.64	118	3.3	84	0.51	13	0.27	7
175	6.69	170	6.22	158	4.92	125	0.55	14	0.39	10
180 / 190	6.69	170	6.22	158	4.92	125	0.55	14	0.39	10
220	9.92	252	9.64	245	5.98	152	0.78	20	0.78	22
225	8.78	223	8.26	210	5.74	146	1.1	28	0.98	25
250	10	255	9.44	240	6.45	164	1.22	31	1.1	28
280	11	280	10.2	260	7.2	183	1.37	35	1.22	31





Backward Curved Motorized Impellers

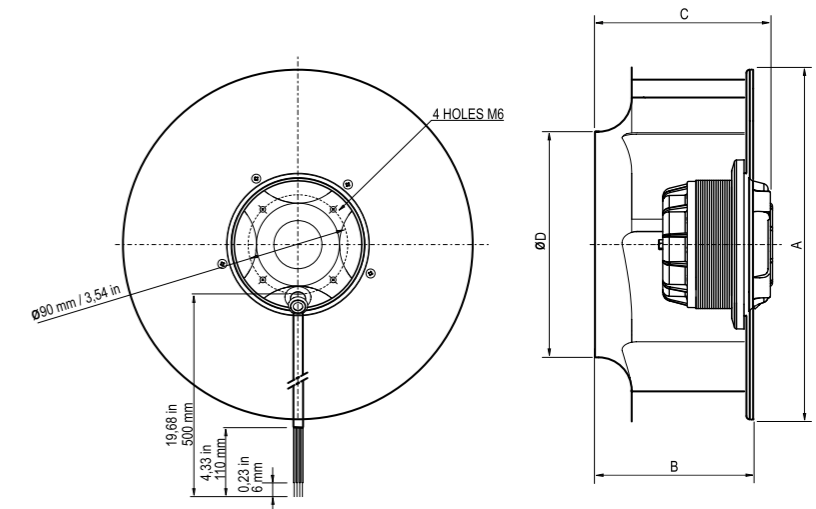
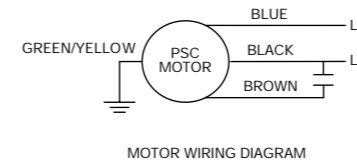
4 POLE MOTORS

4 POLE MOTORS

MODEL	PERFORMANCES								DIMENSIONS				Impeller Material				
	N°	V	Hz	CFM	W	RPM	dBA	µF	A	B	C	D					
RB4C-315/145 K000 I	1	115	60	1112	220	1600	64	12	12,6	320	5,6	142	6,22	158	8,03	204	Metallic
RB4C-315/145 K918 I	1	230	60	1112	195	1600	64	3	12,6	320	5,6	142	6,22	158	8,03	204	Metallic
RB4C-355/170 K000 I	2	115	60	1930	320	1640	70	32	14,2	360	6,7	170	7,32	186	9,29	236	Metallic
RB4C-355/170 K925 I	2	230	60	1930	320	1640	70	8	14,2	360	6,7	170	7,32	186	9,29	236	Metallic

All data taken @ 0.00 S.P. with inlet ring at 60 Hz (name plate rating may vary from data).

S&P Backward Curved Motorized Impellers offer a quiet and compact air moving solution. The Permanent Split Capacitor (PSC) motors provide reduced operating costs and longer service life. Ball bearing construction allows multiple mounting options. Motorized Impellers have low profiles that do not require a housing. Air is discharged 360° radially from the impeller wheel. These units operate very efficiently at high pressures.



4 POLE MOTORS

Product Features

- Sealed Ball Bearings
- 20" (500 mm) Standard Lead Length
- Clockwise Rotation Viewing Inlet

